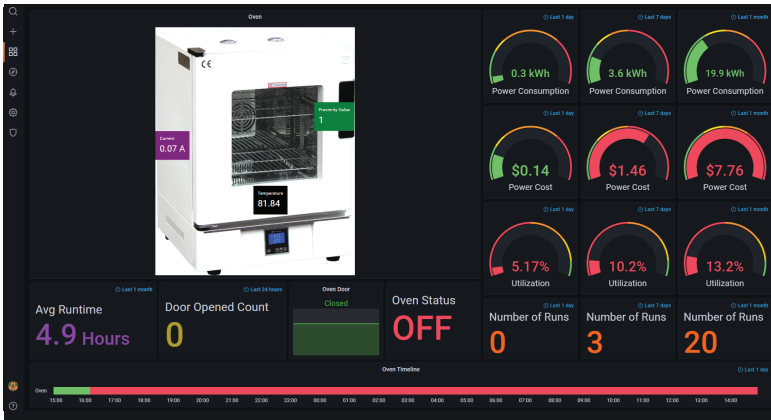




# BURN-IN/INDUSTRIAL OVEN

## MARKET READY KIT

Measure all aspects of your Burn-In/Industrial Oven to optimize settings, track production profile deviations in real-time, compare machine performance, reduce energy consumption and implement preventative maintenance.



- ✓ Environmental Variables Inside the Oven (Temperature, Humidity, Pressure)
- ✓ Environmental Variables Outside the Oven (Temperature, Humidity, Pressure)
- ✓ Door Status (Open-Closed)
- ✓ Door Opens Per Run
- ✓ Job Duration
- ✓ Yield Per Job
- ✓ Cost Per Unit, Cost Per Run (Material and Energy)
- ✓ Machine Utilization/Uptime

Ectron's Market Ready Kit is plug-and-play. Start measuring data and get analytics to optimize production and save costs. Make your operation more efficient and product quality more consistent.

- ✓ Monitor equipment characteristics for anomalies.
- ✓ Optimize variables and set operational rules.
- ✓ Root cause product nonconformance caused by equipment deviations.
- ✓ Pinpoint equipment deviations for predictive maintenance and repairs.
- ✓ Track environmental effects on product quality and equipment performance.
- ✓ Forecast and track per run cost (including energy cost).
- ✓ Check usage hours to trigger notification for routine maintenance.
- ✓ Run simulations to see what changes in the process yield efficiencies.
- ✓ Get OEE numbers for each machine
- ✓ Utilize energy data to support a Sustainability Program.

The entire kit is built around Ectron's Edge Node (for Cloud data analytics) or Intelligent Edge Node (for Edge data analytics). Both aggregate and interpret sensor data. The data can be viewed on a customized dashboard or sent directly to your existing ERP solution or other business intelligence software.



# Standard Configuration of the Market Ready Kit is:

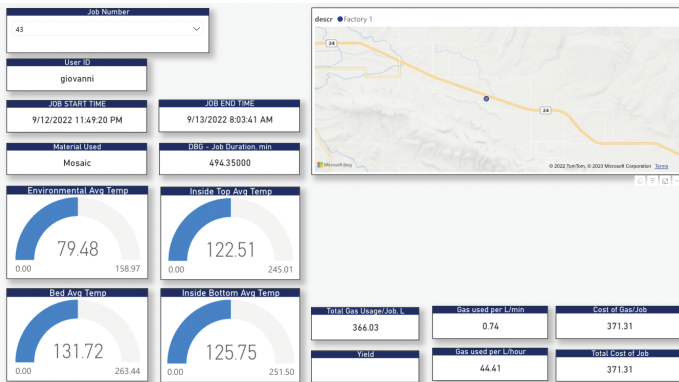
- ✓ 1 Edge Node or Intelligent Edge Node
- ✓ 1 Multifunction Environmental Sensor
- ✓ 1 Power Sensor Module
- ✓ 1 Temperature Sensor
- ✓ 1 Computer Tablet for Operator Data Entry

- ✓ Plug-and-Play
- ✓ Installed in 1 Day
- ✓ No Changes to Equipment
- ✓ No Engineering or IT Staff Required
- ✓ Instant Access
- ✓ Installation Assistance Available

## Multiple Variables Available For Edge And Cloud Analytics



## Management Level Dashboard



## User Interface

Entry | Machine Dashboards | Summary | Sign Out

Employee ID

Job Number

Station ID

Material

Amount (# units)

Maintenance Mode  
 off

**Status**

Status: Current: 0 A

Time: 00:00:00 Door Status: Open

Temp Range: 0...0 Humidity: 0 %

Last ts: Temperature: 32 F

Start
Pause
Stop

00:00:00
Oven Dashboard

Job Details

This Market-Ready Kit is offered by Ectron and its partner Balluff

# BALLUFF